



DJ PROMIXER



COMPATIBLE HARDWARE



## PIONEER DDJ - WEGO AUDIO & MIDI

### HOW TO SET UP?

The system must recognize your Pioneer WeGO as Audio and MIDI device before configuring in DJ ProMixer.

Pioneer DDJ WeGO only requires download and install the latest drivers, once installed you can configure in DJ ProMixer.

Open DJ ProMixer and go to **"Config"** and open **"Audio Setup"**, here you can select your Pioneer WeeGO as Audio Sound Card.

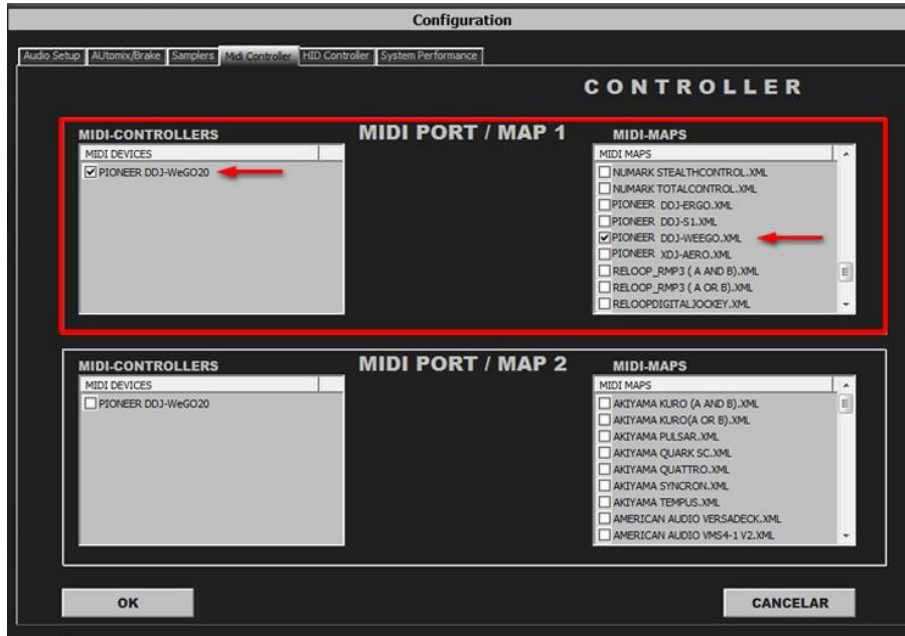
### AUDIO SET UP



**Important:** Pioneer DDJ-WeGO is designed to be used as internal mode (with internal Sound Card), but you can use also with DJ ProMixer as external mode (with other/s Sound Card/s and external mixer).

### MIDI SET UP

In “Config” go to “MIDI Controllers” and then select in MIDI PORT / MIDI MAP 1 on the left side one device (Pioneer DDJ-WeeGo) and select on the right side PIONEER DDJ WEEGO.XML. MIDI PORT / MIDI MAP 2: Nothing Selected.



MIDI MAP (Overview)



(Click to enlarge)

Detail



- 1.- PLAY/ PAUSE
- 2.- CUE
- 3.- MANUAL LOOP (IN)
- 4.- MANUAL LOOP (OUT – EXIT – RELOOP)
- 5.- EFFECTS DIRECT BUTTONS EFX 1, EFX2, EFX3
- 6.- AUTOLOOP FROM ¼ TO 32 BEATS (STARTS IN 2 BEATS)
- 7.- MEMORY CUE / LOOP (1,2,3,4)
- 8.- ENABLE SAMPLER (1,2,3,4)
- 9.- PITCH
- 10.- SYNC
- 11.- DECK'S VOLUMEN CONTROLS AND CROSSFADER
- 12.- ROTARY KNOBS OF THE MIXER (HI, MID, BASS)
- 13.- TRACKLIST SCROLL, + SHIFT : BROWSER (PLAYLIST, GROUPS, EXPLORER), OPEN CLOSE FOLDERS
- 14.- LOAD DECK (A AND B)
- 15.- SHIFT
- 16.- PFL, +SHIFT: CHANGE WHEEL COLOR
- 17.- BEND (WHEEL)
- 18.- SCRATCH

**More info about DJ ProMixer:**

<http://www.djpromixer.com>