



DJ PROMIXER



COMPATIBLE HARDWARE

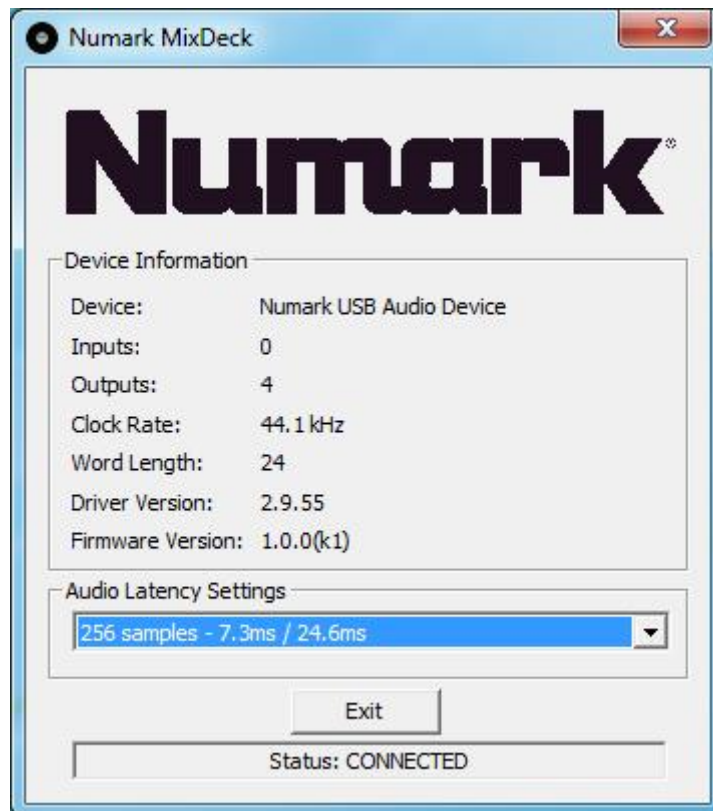


NUMARK MIXDECK AUDIO & MIDI SET UP

HOW TO SET UP?

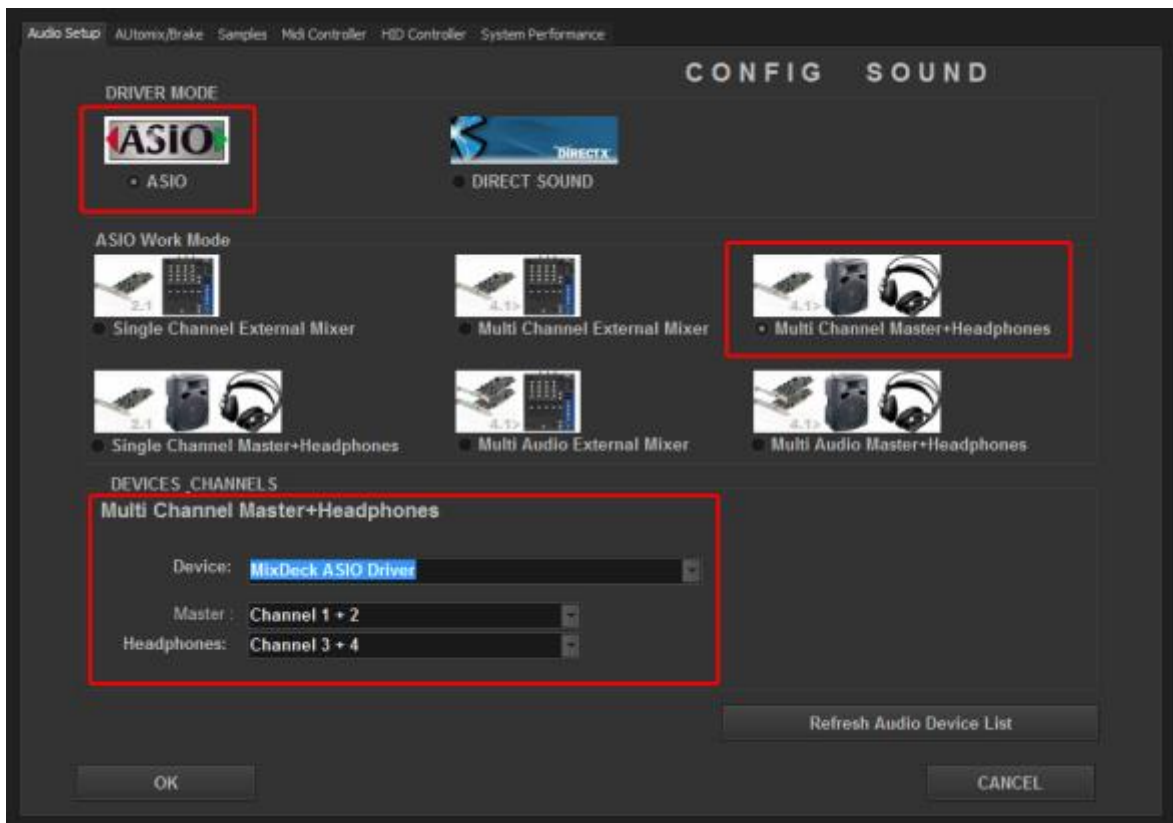
The system must recognize your Numark Mixdeck as Audio and MIDI Device before configuring in DJ ProMixer.

Numark Mixdeck only requires download and **install Numark Asio Driver**.



Open DJ ProMixer and go to "**Config**" and open "**Audio Setup**", here you can select your Numark Mixdeck as Audio Sound Card.

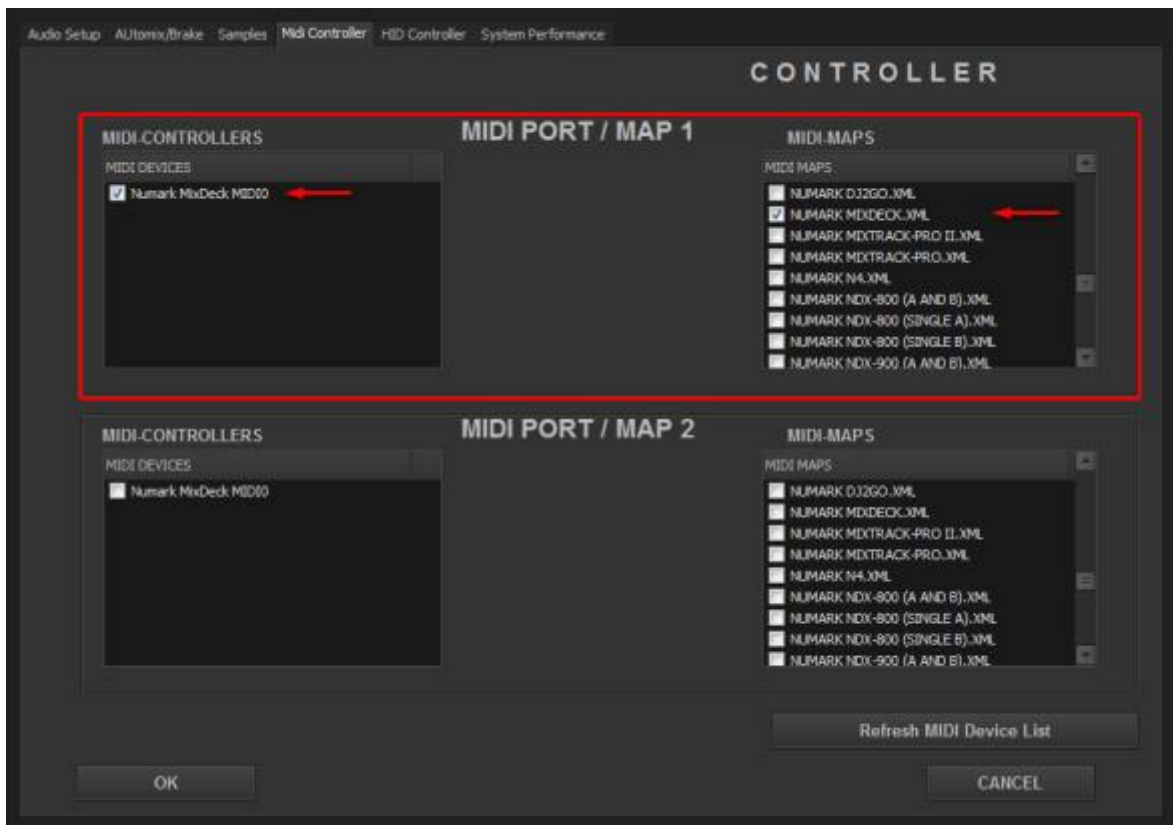
AUDIO SETTINGS



For Internal Mode choose your output: 1.- for XLR connectors (balanced) or 2.- for RCA (unbalanced).

Important: Numark Mixdeck is designed to be used as internal mode (with internal Sound Card), but you can use also with DJ ProMixer as external mode (with other/s Sound Card/s and external mixer).

MIDI SET UP



In “Config” go to “MIDI Controllers” and then select in MIDI PORT / MIDI MAP 1 on the left side one device (Numark Mixdeck) and select on the right side NUMARK MIXDECK.XML. MIDI PORT / MIDI MAP 2: Nothing Selected.

MIDI MAP Overview



Detail



- 1.- PLAY
- 2.- PAUSE
- 3.- CUE
- 4.- CHANGE FOCUS PLAYLIST / GROUPS-SUBGROUPS / EXPLORER
- 5.- SCROLL / LOAD / ENTER
- 6.- CHANGE FOCUS THREE / TRACKLIST
- 7.- REVERSE / BRAKE
- 8.- MANUAL LOOP (IN – OUT – EXIT / RELOOP) DIRECT AUTO LOOP (IN / EXIT) (STARTS IN 4 BEATS)
- 9.- AUTOLOOP FROM ¼ TO 32 BEATS (STARTS IN 4 BEATS)
- 10.- SEARCH (WHEEL MODE)
- 11.- CUE / LOOP MEMORY (1, 2, 3) (NORMAL MODE) / SAMPLES (1, 2, 3 WITH SAMPLER BUTTON ACTIVATED)
- 12.- SAMPLER MODE ON / OFF
- 13.- MEMORIZE CUE / LOOP
- 14.- KEYLOCK
- 15.- PITCH
- 16.- PITCH BEND
- 17.- SYNC
- 18.- FX 1 (ECHO) LEFT (ON) CENTER (OFF) - FX 2 (FLANGER) RIGHT (ON) CENTER (OFF)
- 19.- FX 3 (WAH)
- 20.- FX DRY / WET
- 21.- FX PARAMETER
- 22.- BEND (WHEEL)
- 23.- SCRATCH (WHEEL)
- 24.- DECK VOLUMEN
- 25.- HEADPHONES VOLUMEN
- 26.- DECK SELECTOR (DECK A / DECK B) (ONLY DUAL MODE)
- 27.- LINK TO PC (SOURCE)

More info about DJ ProMixer:

<http://www.djpromixer.com>