



DJ PROMIXER



COMPATIBLE HARDWARE

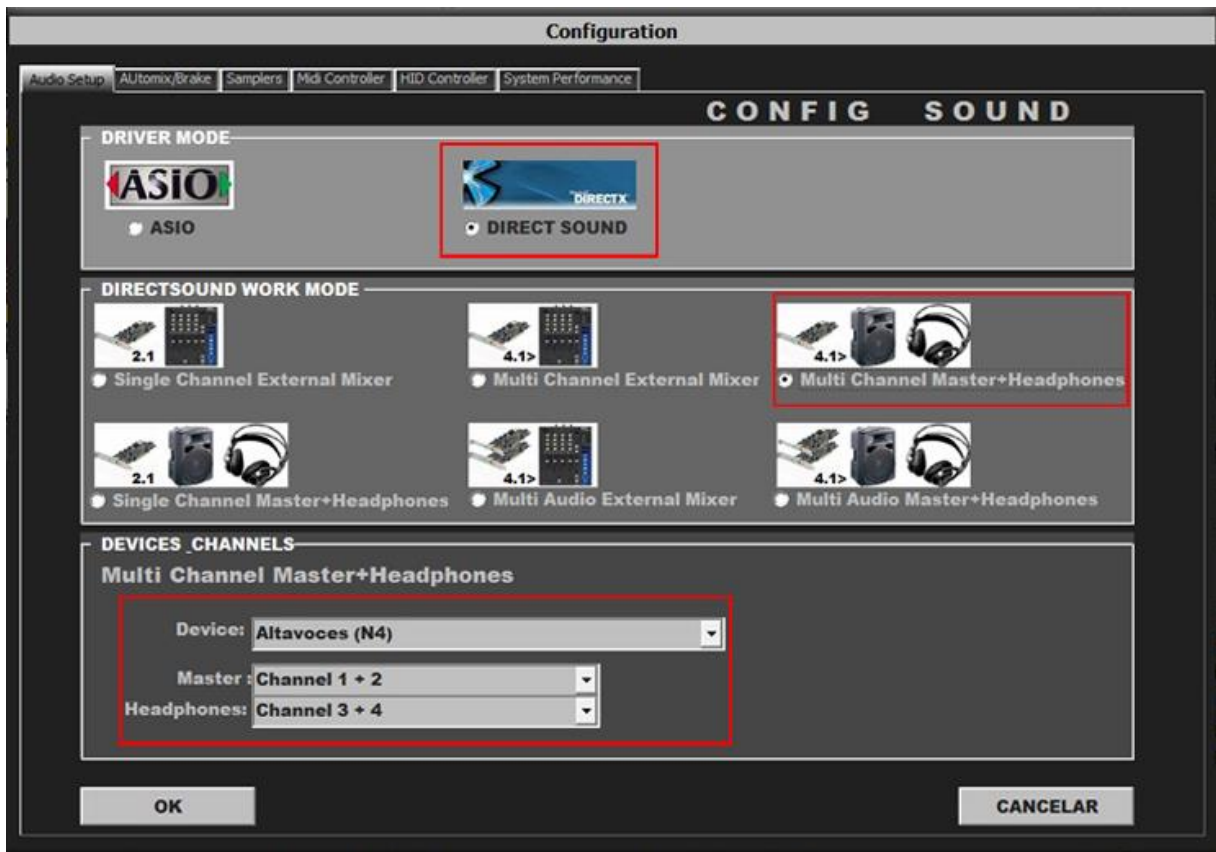


NUMARK N4 AUDIO & MIDI

HOW TO SET UP?

The system must recognize your Numark N4 as Audio and MIDI device before configuring in DJ ProMixer.

AUDIO SET UP

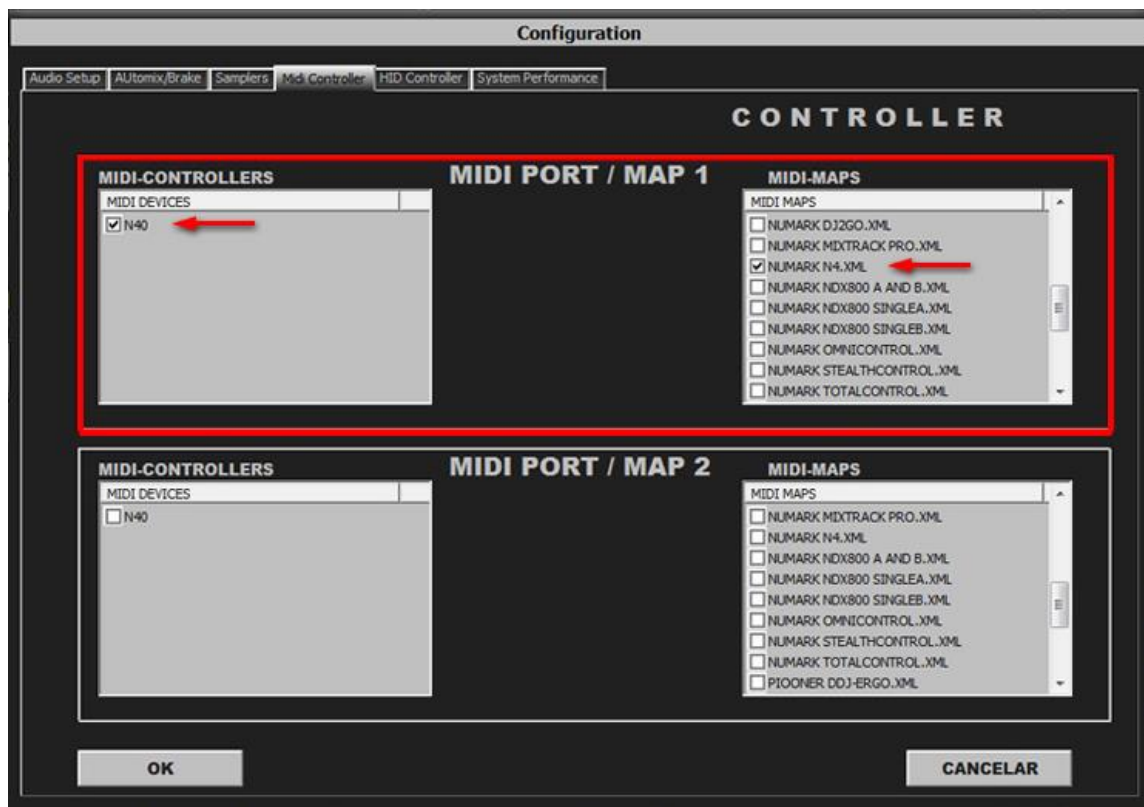




For Internal Mode choose your output: 1.- for XLR connectors (balanced) or 2.- for RCA (unbalanced) or Booth.

Important: Numark N4 is designed to be used as internal mode (with internal Sound Card), but you can use also with DJ ProMixer as external mode (with other/s Sound Card/s and external mixer).

MIDI CONFIGURATION



In “Config” go to “MIDI Controllers” and then select in MIDI PORT / MIDI MAP 1 on the left side one device (N4) and select on the right side NUMARK N4.XML.
MIDI PORT / MIDI MAP 2: Nothing Selected.

MIDI MAP

Overview



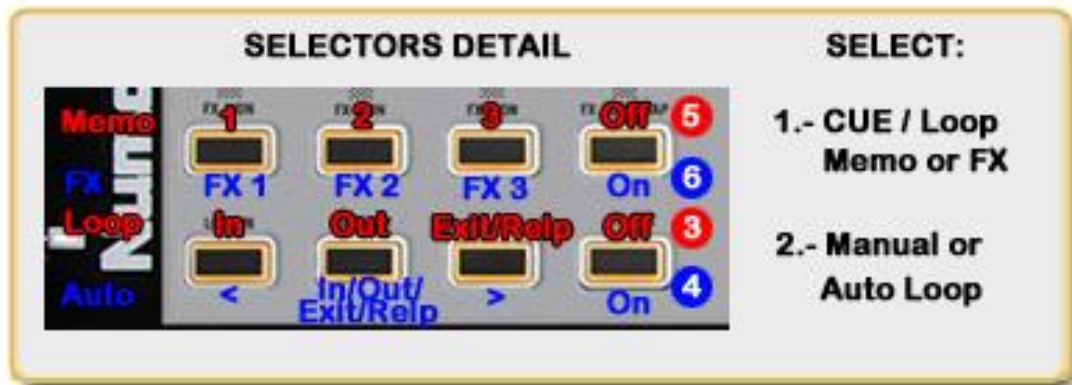
Detail



- 1.- PLAY / PAUSE
- 2.- CUE
- 3.- SELECTOR OFF : MANUAL LOOP (1.- IN 2.- OUT 3.- EXIT / RELOOP)
- 4.- SELECTOR ON: AUTOLOOP FROM ¼ TO 32 BEATS (STARTS IN 4 BEATS)(1.-MOVE DOWN
2.- IN EXIT / RELOOP IN 3.-MOVE UP)
- 5.- SELECTOR OFF: MEMORY CUE/LOOP (1,2,3)
- 6.- SELECTOR ON: FX 1, FX 2, FX 3
- 7.- CHANGE PITCH RANGE (4%, 8%, 10%, 12%, 32 %)
- 8.- KEYLOCK
- 9.- ENABLE WHEEL VINYL MODE
- 10.- FX SYNC (FROM 2/1 TO 1/8 BEATS)
- 11.- FX DRY / WET
- 12.- FX PARAMETER
- 13.- AUDIO SOUND CARD CONTROLS
- 14.- TRACKLIST SCROLL
- 15.- LOAD DECK
- 16.- BRAKE
- 17.- PFL
- 18.- ROTARY KNOBS OF THE MIXER (GAIN, HI, MID,BASS)
- 19.- DECK'S VOLUMEN CONTROLS AND CROSSFADER
- 20.- PITCH
- 21.- SYNC
- 22.- BEND (WHEEL)
- 23.- BEND (BUTTONS)
- 24.- SCRATCH

IMPORTANT: This MIDI Map enables two Mixer's Channels (1 and 2), Channels 3 and 4 are disabled.

SELECTORS DETAIL



NEW:

In this MIDI Map there are included two buttons as “*Selectors*”:

- 1.- “**FX Auto Tap**” when is **turn off** it enables **Memory CUE /loop** for FX Buttons, when is **turn on** it enables **Effects**.
- 2.- “**Blank Loop Button**” when is **turn off** it enables **Manual Loop** (In, Out, Exit/Re loop), when is **turn on** it enables **Auto Loop** (Move Down, In / Out /Exit / Re loop, Move Up)

More info about DJ ProMixer:

<http://www.djpromixer.com>