



DJ PROMIXER



COMPATIBLE HARDWARE



**AKIYAMA KURO / K2
MIDI IMPLEMENTATION**

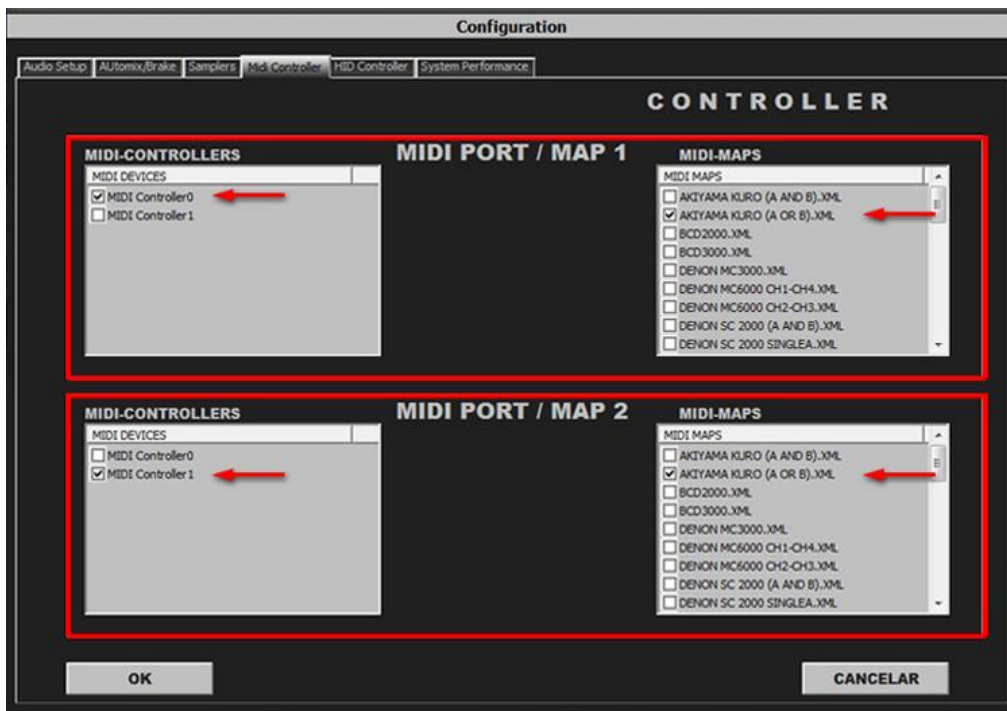
HOW TO SET UP?

The system must recognize your Akiyama Kuro / K2 Device before configuring in DJ ProMixer.

IMPORTANT: Akiyama Kuro / K2 is a MIDI Device (have not integrated audio device/s) For audio configuration choose your work mode and audio sound card/s).

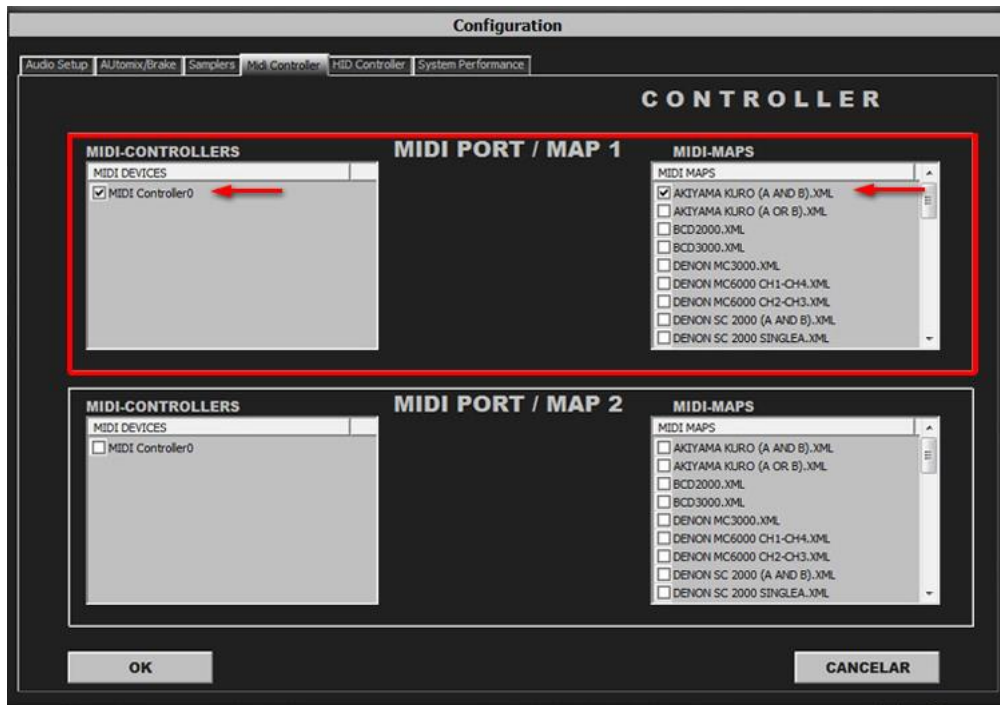
MIDI CONFIGURATION

Single Mode (2 Akiyama Kuro / K2 Connected)



Select in MIDI PORT / MIDI MAP 1 on the left side one device (Midi Controller0) and select on the right side AKIYAMA KURO (A OR B).XML. Select in MIDI PORT / MIDI MAP 2 on the left side the other device (Midi Controller1) and select on the right side AKIYAMA KURO (A OR B).XML

Dual Mode



Select in MIDI PORT / MIDI MAP 1 on the left side your Akiyama Kuro / K2 (Midi Controller0) and select on the right side AKIYAMA KURO (A AND B).XML. Nothing selected in MIDI PORT / MIDI MAP 2

How to change the decks? Akiyama Kuro / K2 has two direct buttons to select the deck, also it show at the display as "Player A" or "Player B", if your devices are inverted (it depends of the system) swap your devices in Config.

DECK SELECTOR (DETAIL)



MIDI MAP



- 1.- PLAY / PAUSE
- 2.- CUE
- 3.- CUP (CUE & PLAY)
- 4.- CHANGE FOCUS PLAYLIST / GROUPS-SUBGROUPS / EXPLORER
- 5.- TRACK SCROLL / PUSH (LOAD)
- 6.- FOLDER SCROLL / PUSH (OPEN-CLOSE)
- 7.- REVERSE
- 8.- MANUAL LOOP (IN – OUT – EXIT / RELOOP)
DIRECT AUTO LOOP (IN / EXIT) (STARTS IN 4 BEATS)
- 9.- AUTOLOOP FROM ¼ TO 32 BEATS (STARTS IN 4 BEATS)
- 10.- SELECTOR AUTOLOOP (FROM ¼ TO 32 BEATS) / FX BEAT (FROM 1/8 TO 2/1)
- 11.- SELECTOR AUTOLOOP / FX BEAT << MOVE DOWN / MOVE UP>>
- 12.- WHEEL MODE (SCRATCH, SEARCH, FX)
- 13.- CHANGE TEMPO RANGE (4%, 8%, 10%, 12%, 16%, 32%)
- 14.- KEYLOCK
- 15.- PITCH
- 16.- PITCH BEND
- 17.- SYNC
- 18.- MEMORIZE CUE / LOOP POINT
- 19.- DELETE CUE / LOOP POINT
- 20.- SAMPLE MODE ACTIVATED
- 21.- CUE LOOP MEMORY (1 TO 4) (NORMAL MODE) / SAMPLES (1 TO 4) (SAMPLE BUTTON ACTIVATED)
- 22.- BEND (WHEEL)
- 23.- SCRATCH (WHEEL)
- 24.- EFFECTS (ECHO, FLANGER, WAH)
- 25.- DECK SELECTOR (DECK A / DECK B)
- 26.- LINK TO PC

More info about DJ ProMixer:

<http://www.djpromixer.com>