



# DJ PROMIXER



# MIDI IMPLEMENTATION



### AKIYAMA TEMPUS AUDIO & MIDI IMPLEMENTATION



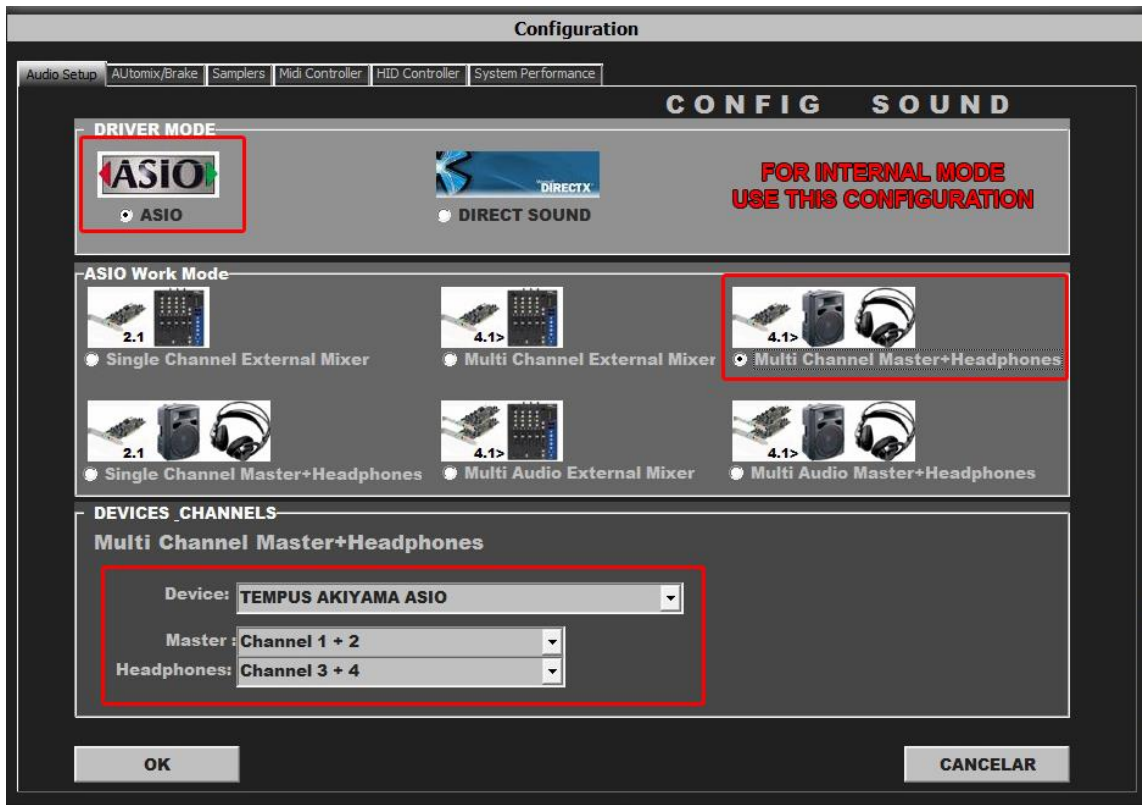
**Installing your device** Your System must to recognize your Akiyama Tempus as Audio Device and MIDI Device before configure in DJ ProMixer.

#### CONFIGURE YOUR AUDIO SETTINGS

Easy to configure it only requires download and **Akiyama Asio Driver**, once installed you can configure your Tempus in DJ ProMixer.



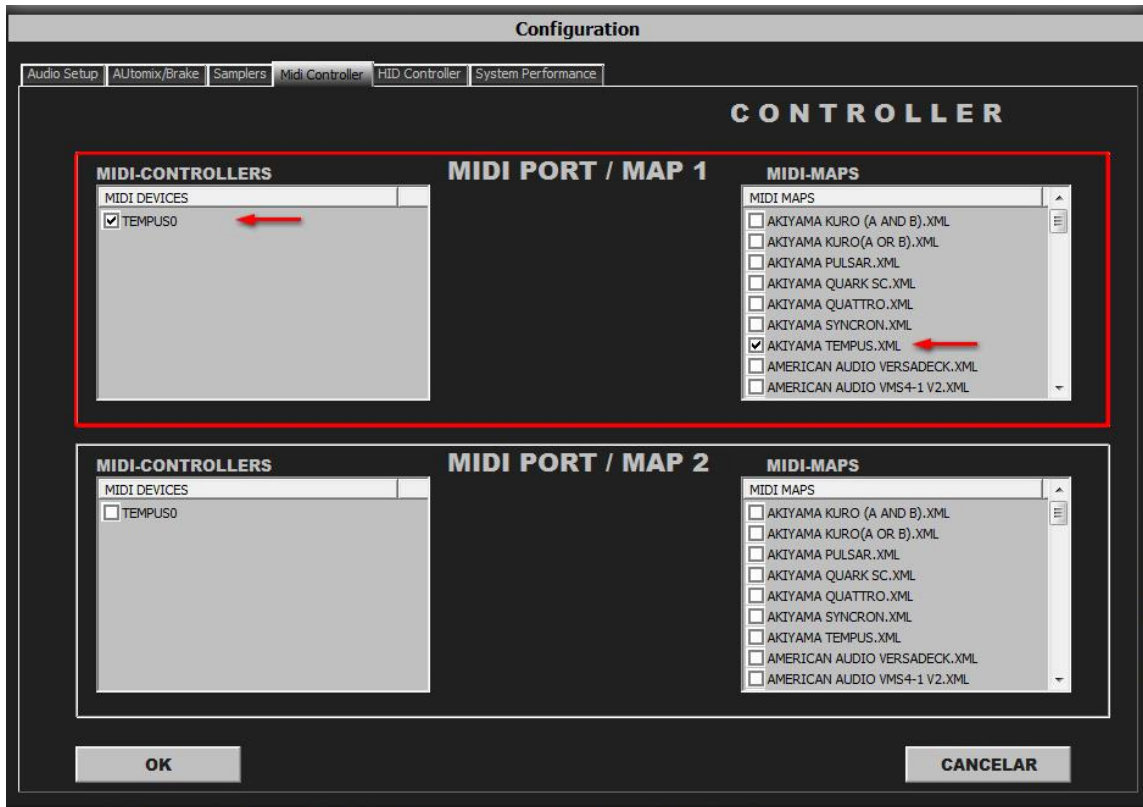
Open DJ ProMixer and go to “Config” and open “Audio Setup”, here you can select your Akiyama Tempus as Audio Sound Card.



For Internal Mode choose your output: 1.- for ¼ TSR connectors (balanced) or 2.- for RCA (unbalanced).

**Important:** Akiyama Tempus is designed to be used in internal mode (with internal Sound Card), but you can use also with DJ ProMixer in external mode (with other/s Sound Card/s and external mixer).

MIDI CONFIGURATION



In “Config” go to “MIDI Controllers” and then select in MIDI PORT / MIDI MAP 1 on the left side one device (TEMPUS) and select on the right side AKIYAMA TEMPUS.XML.  
 MIDI PORT / MIDI MAP 2: Nothing Selected.

MIDI MAP (Overview)



Detail



- 1.- PLAY/ PAUSE
- 2.- CUE
- 3.- MANUAL LOOP (1.- IN 2.- OUT – EXIT – RELOOP)
- 4.- AUTOLOOP FROM ¼ TO 32 BEATS (STARTS IN 4 BEATS) "Active" move "<<", "Del" move ">>"
- 5.- CUP (Cue and Play)
- 6.- KEYLOCK (BY DEFAULT DISABLED)
- 7.- EFFECTS DIRECT BUTTONS EFX 1, EFX2, EFX3
- 8.- MEMORY CUE / LOOP (1,2,3,4)
- 9.- SAMPLES (1,2,3,4)
- 10.- FX SYNC (FROM 2/1 TO 1/8 BEATS)
- 11.- FX DRY / WET
- 12.- FX PARAMETER
- 13.- ENABLE WHEEL VINYL MODE
- 14.- TRACKLIST SCROLL
- 15.- LOAD DECK (A AND B)
- 16.- BROWSER (PLAYLIST, GROUPS, EXPLORER), OPEN CLOSE FOLDERS
- 17.- PFL
- 18.- ROTARY KNOBS OF THE MIXER (GAIN, HI, MID,BASS)
- 19.- DECK'S VOLUMEN CONTROLS AND CROSSFADER
- 20.- PITCH
- 21.- SYNC
- 22.- BEND (WHEEL)
- 23.- BEND (BUTTONS)
- 24.- SCRATCH
- 25.- BRAKE

**More info about DJ ProMixer:**

<http://www.djpromixer.com>

**More info about mapping of Akiyama Tempus**

<http://wp.me/p1NvxM-jw>